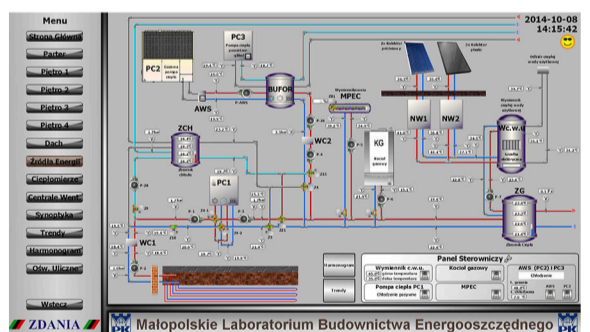
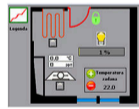
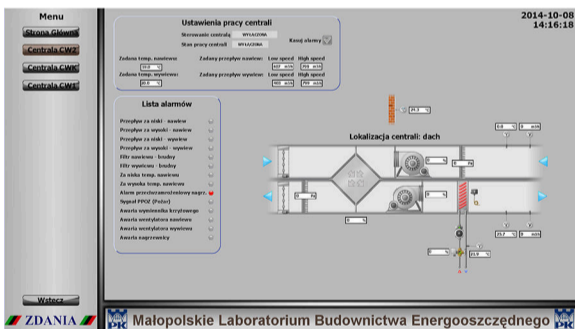
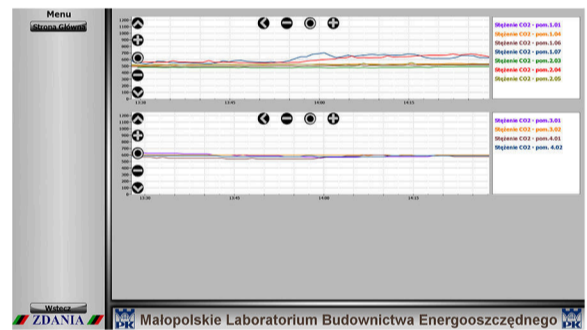
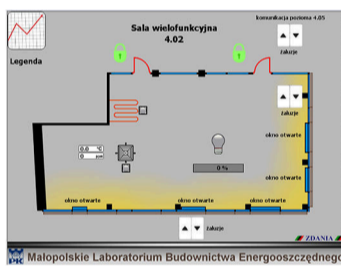
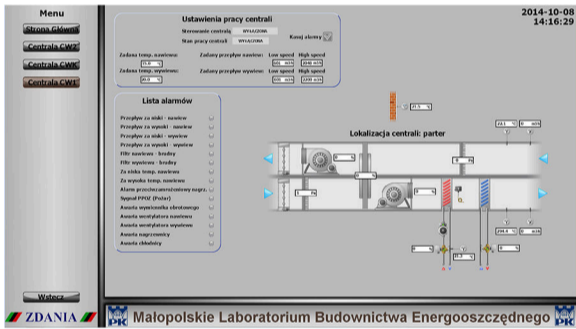
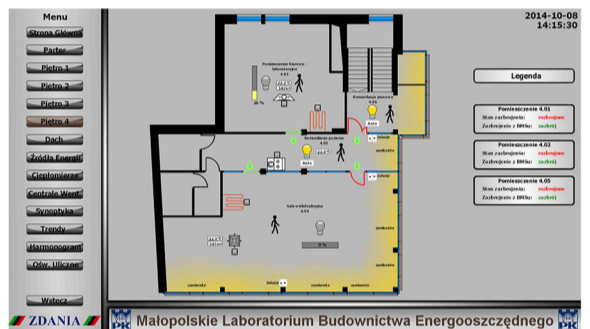
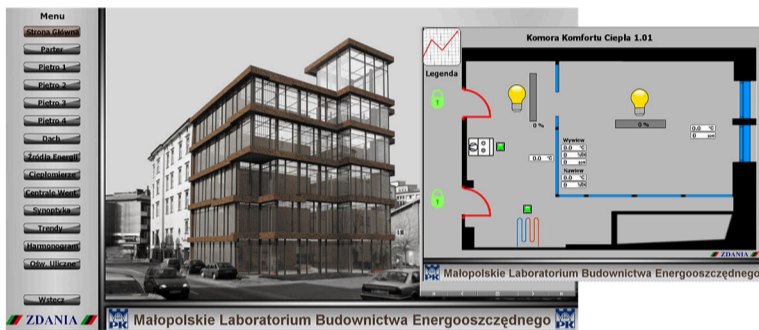
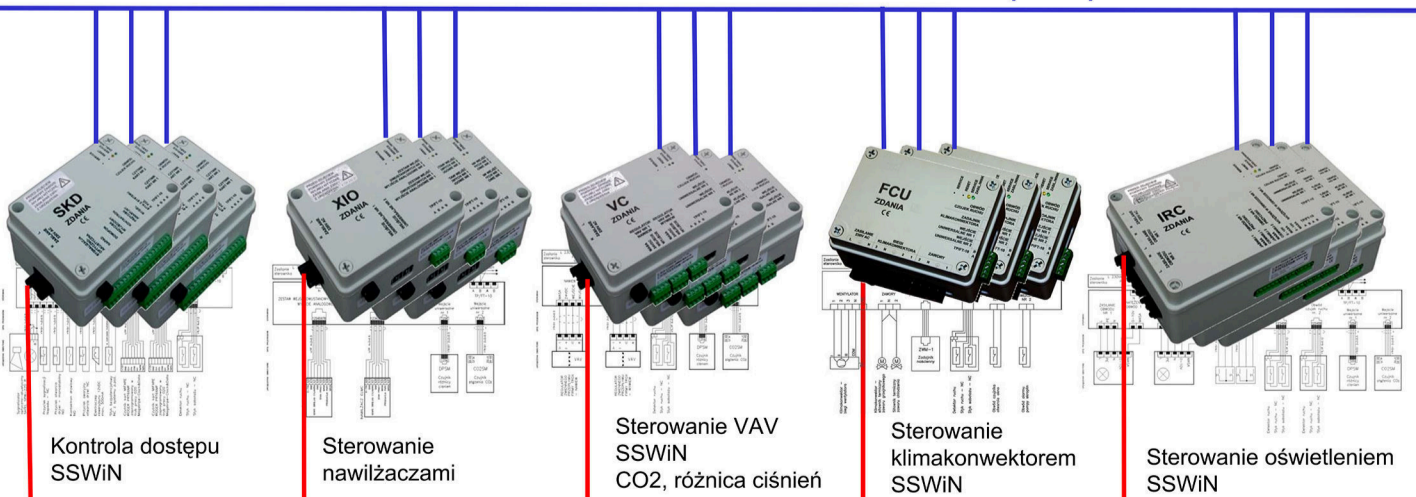


# Małopolskie Laboratorium Budownictwa Energooszczędnego Politechniki Krakowskiej System badawczy BMS



**Rozproszony system sterowania, bezpieczeństwa i zasilania**  
Integracja pozioma (objektowa) wielu funkcjonalności w ramach jednej sieci sterowania

Lokalna sieć sterowania PN-EN 14908 (LON)



**Zasilanie sterowników i urządzeń wykonawczych**